

alluring, subtle fragrance with antimicrobial benefits

conarom™ b aromatic

INCI phenylpropanol (and) humulus lupulus (hops) extract

Conarom™ b aromatic is an effective solution that addresses the growing consumer demand for multifunctional and sustainable ingredients. The aromatic is based on naturally derived hops extract and the nature identical Phenylpropanol. It adds a gentle flowery-to-spicy fragrance to differentiate and impart additional allure to the end use formulation.

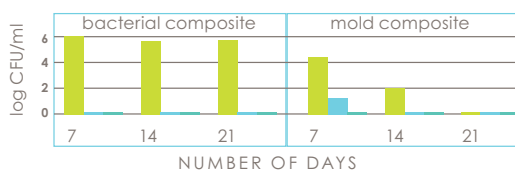
At dosages of 0.3 to 2% it contributes to microbial stabilization by delivering broad antimicrobial protection as a secondary effect. Formulators will appreciate the liquid state, good formulation compatibility and broad pH applicability. **Conarom™ b aromatic** can be added to formulations at any phase of production when worked into products at ambient temperature. Typical uses include body and skin care emulsions, sun care, shampoo and body washes, conditioners and wet wipes.

Description

An effective solution that adds a gentle fragrance to end products and delivers broad antimicrobial protection for body & skin care emulsions, sun care, shampoo & body washes, conditioners and wet wipes.



conarom b aromatic vs. unpreserved control



● unpreserved control ● conarom b aromatic 1%
● conarom b aromatic 1.5%

bac comp: S. aureus, E. coli, P. aeruginosa, B. cepacia. mold comp: A. niger, C. albicans

challenge tests in baby wipes (cellulosic non-woven, pH 5.2 – 5.4)

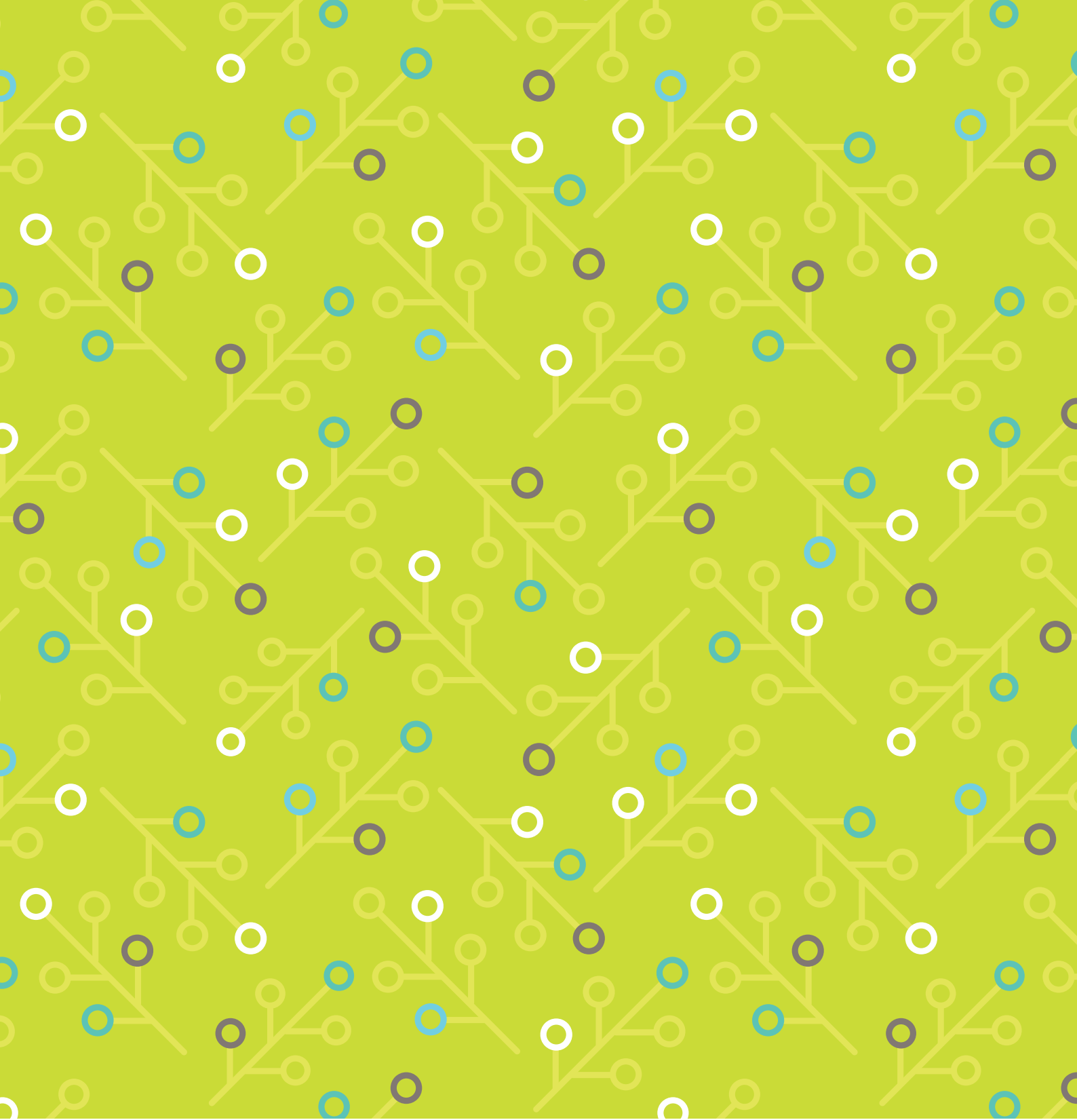
Procedure

- 1 Dissolve ingredients of phase a in water at RT with sweep blade.
- 2 Combine ingredients of phase b and mix separately till clear.
- 3 Add phase b to phase a, mix well.
- 4 Add in order ingredients of phase c, mix after each addition.
- 5 Adjust pH in phase d.

pH 5.3-6.0

impeller used: sweep blade
mixing rate: 250 to 300 rpm.

ingredients	INCI name	% w/w	supplier
PHASE A			
de-ionized water	water	q.s.100	
citric acid (10% aq.)	citric acid	0.5	
PHASE B			
liposorb L20	polysorbate 20	0.2	lipo
vital™ ET	disodium lauriminodipropionate tocopheryl phosphates	0.05	ashland
PHASE C			
sittec DMC 6031	PEG/PPG-25/25 dimethicone	0.1	wacker
glycerin	glycerin	0.5	rita
PHASE D			
NaOH (10%) to adjust pH	sodium hydroxide	q.s. pH 5.3	
conarom™ b aromatic	phenylpropanol (and) humulus lupulus (hops) extract	1 or 1.5	
liposorb L20	polysorbate 20	0.8	lipo



**GLOBAL HEADQUARTERS
ASHLAND**

50 East RiverCenter Blvd.
Covington, KY 41012-0391
U.S.A.Tel: +1 859 815 3333

LATIN AMERICA

São Paulo, Brazil
Tel: +55 11 3649 0454
+55 11 3649 0450

EUROPE

Barcelona, Spain
Tel: +34 93 298 0700
Fax: +34 93 298 0705

ASIA PACIFIC

Singapore
Tel: +65 6775 5366
Fax: +65 6775 5433

Shanghai, P.R. China
Tel: +86 21 6090 6606
Fax: +86 21 6090 6699

MIDDLE EAST, AFRICA, INDIA

Turkey
Tel: +90 216 538 08 00
Fax: +90 216 538 08 80

personalcare@ashland.com

ashland.com/contact

® Registered trademark, Ashland or its subsidiaries, registered in various countries

™ Trademark, Ashland or its subsidiaries, registered in various countries

* Trademark owned by a third party

© 2017, Ashland / PC-13850

The information contained in this brochure and the various products described are intended for use only by persons having technical skill and at their own discretion and risk after they have performed necessary technical investigations, tests and evaluations of the products and their uses. Certain end uses of these products may be regulated pursuant to rules or regulations governing medical devices, drug uses, or pesticidal or antimicrobial uses. It is the end user's responsibility to determine the applicability of such regulations to its products.

All statements, information, and data presented herein are believed to be accurate and reliable, but are not to be taken as a guarantee of fitness for a particular purpose, or representation, express or implied, for which seller assumes legal responsibility. No freedom to use any patent owned by Ashland, its subsidiaries, or its suppliers is to be inferred.